



PENNON

36.5 meters motor yacht

Overview

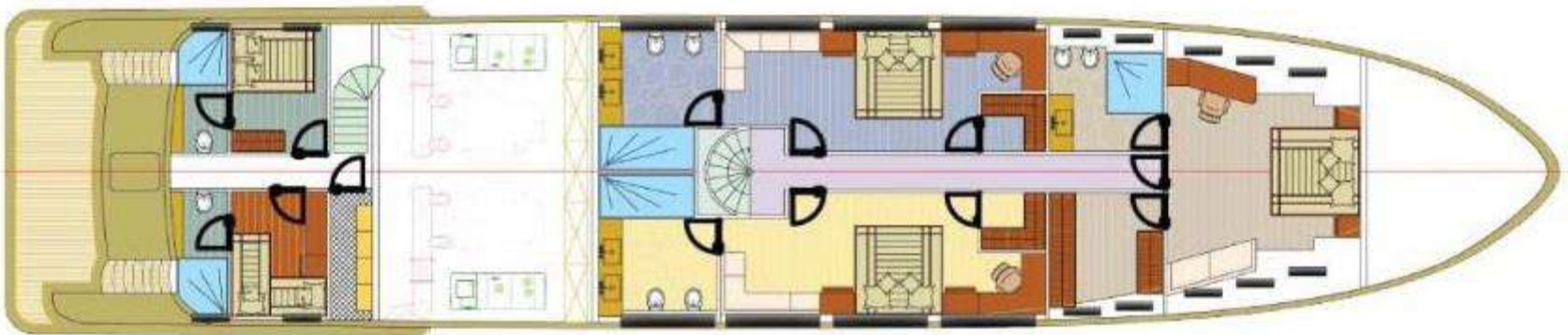
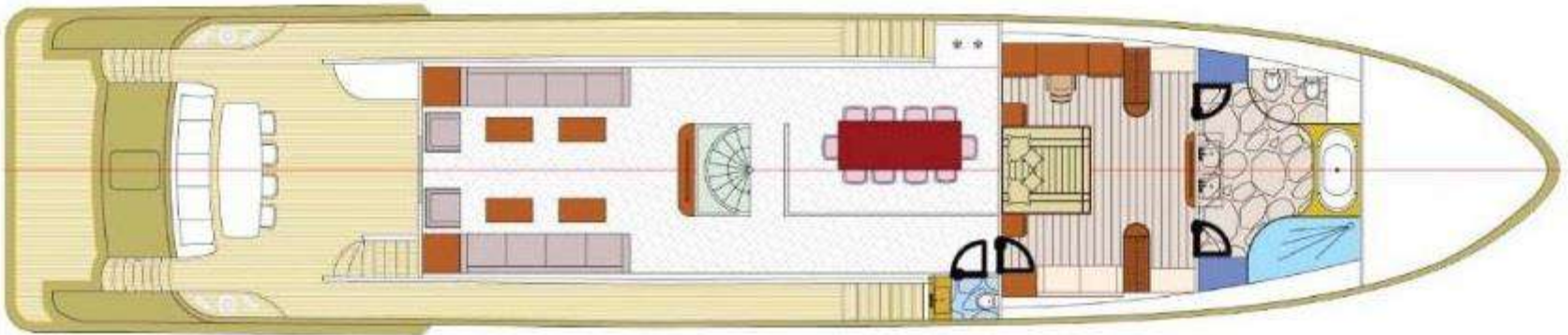
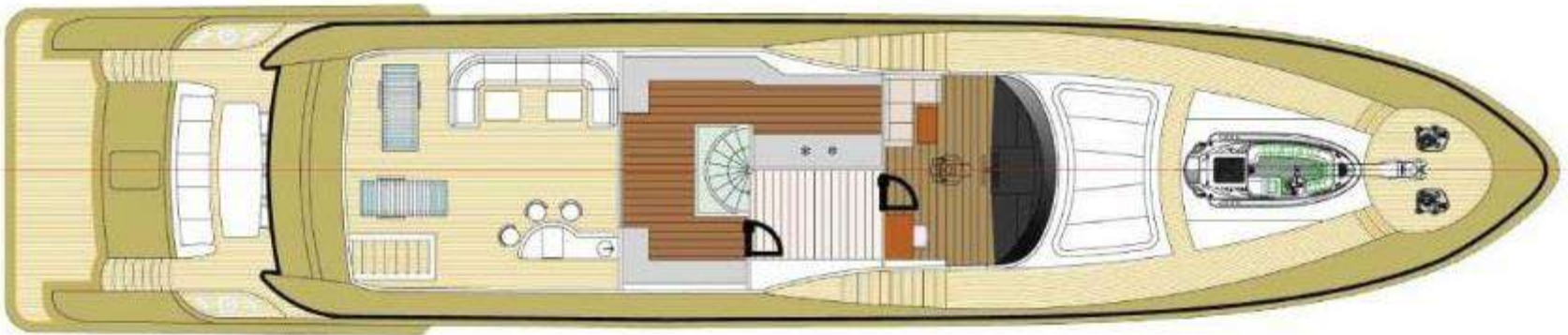
The shark looking luxury motor yacht PENNON featuring a sporty profile. Glass played an essential role in creating the exterior design as a combination of the hull's golden color with black glass outfitting that transforms the motor yacht into a golden dream. 36.5 meters PENNON, is constructed with wooden, lamination, epoxy as RINA class motor yacht. With her 1925 HP CAT engines she can reach to 21 knots maximum speed and 16 knots cruising speed. PENNON has 1 main saloon, 1 master cabin, 3 guest cabins and 2 crew cabins.











PENNON SPECIFICATIONS

- LOA : 36,50 METERS
- BEAM : 7,65 METERS
- DRAFT : 2,10 METERS
- DISPLACEMENT : 247 TONS
- DELIVERY TIME : 2011
- MAIN ENGINES : 2 X CAT C32 1925 HP
- GENERATORS : 2x CAT C4.4 86 KW
- MAXIMUM SPEED : 21 KTS
- ECONOMIC SPEED : 16 KTS.
- RANGE : 360 NM. (MAX.SPEED)
- TYPE : MOTOR YACHT (RINA CLASS)
- CONSTRUCTION : WOODEN, LAMINATION, EPOXY
- CABINS : 1 MASTER, 4 GUEST, 3 CREW CABINS
- FUEL CAPACITY : 13100 LITERS
- FRESH WATER CAPACITY : 2300 LITERS